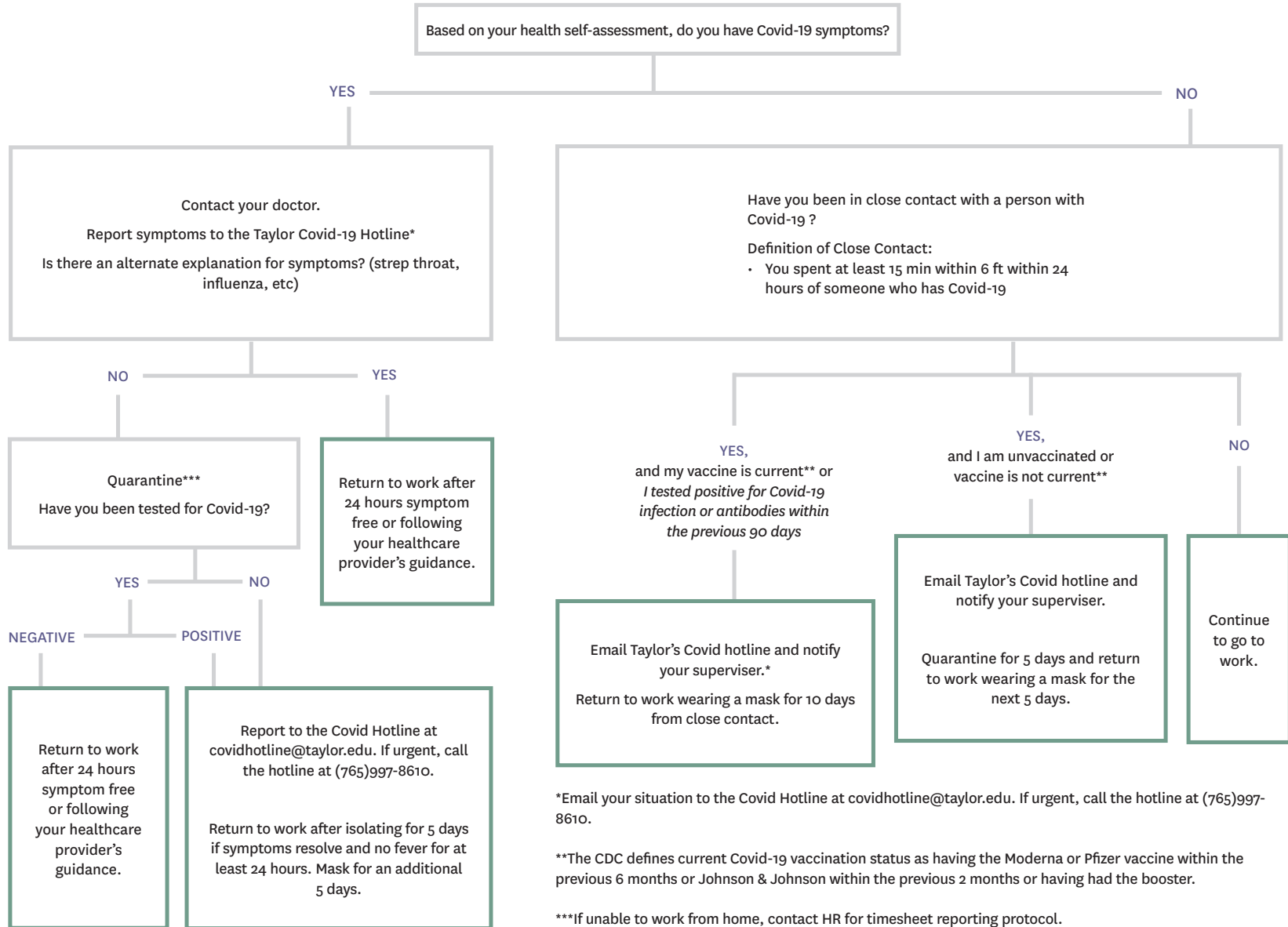


CAN I COME TO WORK?



*Email your situation to the Covid Hotline at covidhotline@taylor.edu. If urgent, call the hotline at (765)997-8610.

**The CDC defines current Covid-19 vaccination status as having the Moderna or Pfizer vaccine within the previous 6 months or Johnson & Johnson within the previous 2 months or having had the booster.

***If unable to work from home, contact HR for timesheet reporting protocol.